

Internet Education in Schools

By Ritsu Inaba

Today, the way to educate is changing dramatically around the world. Information and Communication Technology (ICT) such as computers, tablets and smartphones came to be used in education.

Internet education has some advantages. First, it helps students study more efficiently. For example, they can review their answers to questions they have already studied over and over again. If they cannot understand the content of the text, ICT can show them some pictures, movies and sounds. For instance, they can listen to sounds in English as well as watch foreign movies in English classes.

Therefore, ICT can motivate students. Thanks to ICT, students can get information about many things which they are interested in. In addition, students who don't like to stand out can tell their classmates and teachers their own opinions freely by writing on ICT. Furthermore, more students can use ICT to study more deeply.

Second, ICT is very useful. It is not difficult to manipulate ICT. Students don't have to carry too many books, and it is easy to search for something they don't know without dictionaries by using ICT. Moreover, they can replicate some documents which they make or download from the Internet easily. ICT always preserves records of their study, so they don't need to be afraid of making mistakes. Even if students make mistakes, their teacher can help them quickly.

In addition, students can acquire skills to use electronic devices like ICT. These days, the number of people who operate ICT such as PCs and tablets correctly is increasing day by day, so it is important for students to develop skills to use ICT. For that reason, it's a great opportunity to use ICT in classes.

Third, ICT is essential for not only students, but also their teachers. Thanks to ICT, making class materials has become easier. Teachers don't have to write all of the words in textbooks down on a blackboard in their classes. They can use ICT to teach more efficiently. ICT helps them ease their burden of work. ICT always preserves records of all of the documents which they create, so they don't need to make the same class materials over and over again.

Moreover, teachers can share the progress of their classes with other teachers. Also, when students ask them some questions, they can explain by using ICT.



However, Internet education also has some disadvantages. First, ICT is very expensive. In order to use ICT in education, teachers have to buy many devices.

Thus, it is costly to prepare an environment that uses the Internet in education. If a student breaks a device, the teacher will have to purchase a new one or have it repaired.

Teachers must also estimate the cost of purchasing or fixing in advance. They also have to buy their own devices. Also, the more students and teachers use ICT, the more the costs of electric power consumption will increase.

Second, ICT is delicate. It is easy to break devices. Many students don't know how to use ICT, so they might operate it incorrectly. Not only students but also their teachers must use it properly.

In addition, some students may have trouble using ICT during their classes. Because of this, students may not be able to concentrate on studying. If teachers have to show their students how to operate ICT, the student's study time might be lost. In other words, teachers might waste too much time in class.

Third, ICT is a bit risky. Students might modify the system in ICT freely if they learn the structure sufficiently. For instance, they may install some applications which they like such as games, SNSs, videos and music.

They may visit sites unrelated to studying. This situation is likely to affect the correct method to study.

If students abuse ICT, they might be involved in an incident. There are a lot of dangerous problems on the Internet. Students have to acquire the skill to protect themselves, but it is not easy. Therefore, it may be impossible for students to focus their attention on studying completely.

As you can see, Internet education for students has both advantages and disadvantages. ICT is essential for people who live around the world.

Because of the current development, putting such ICT into the method of education is said to be groundbreaking. It is hoped that Internet education will be more useful for a lot of people as time passes.

These days, the number of schools which use ICT is increasing due to the fact that classes in Japan have been restricted to prevent infection from COVID-19.

At this rate, the importance of Internet education will be noticed more.

Japanese Streamer SHAKA

By Yuga Dobashi

SHAKA is a former professional gamer and streamer from Iizuka city, Fukuoka Prefecture.

He has one million followers on Twitch, and about 750,000 subscribers on YouTube.

He played the games "Alliance of Valiant Arms (AVA)," "Overwatch" in "AVA International Championship (AIC)" and "JCG Overwatch Master 2016-2017 Winter Finals" from 2011 to 2017.

After that, he started streaming on Twitch and left the game company to focus on streaming.

On the evening of June 7, 2020, while playing a match of "Apex Legends" when streaming on Twitch, he suddenly fainted.

An MRI scan performed later revealed that he wasn't seriously ill. A video clip of him fainting during the stream has been viewed more than 1.8 million times and became a hot topic with articles on SNS and the international media.

In Shaka's famous episodes where he had learned to light a ping pong ball on fire, it burns instantly.

He then burned the ball in the table tennis club room with the entire ball basket and set it on fire.



Another time he learned about spray flaming. He took a girl's hair spray from the girls' volleyball club room and sprayed it on a cardboard box gleefully.

The box ignited and burst into flames. Fire trucks were dispatched, and the police investigated it, but the culprit was never identified.

He has participated in many events and competitions and besides FPS, he recently took part in a "Street Fighter VI" competition.

Whatever he does, he has so many viewers that the games he streams are so influential that they temporarily go viral.

There are many clippings but the video "SHAKA looking at Altyu-kalakala" is highly recommended.

The video itself is funny, but his laughter and commentary make it even funnier.

SHAKA is also known for his long hours of streaming.

He streams 400 hours a month at most.

In this case, he was streaming about 13 hours every day.

In this way, he talks about these episodes and trivia in his stream.

He also watches videos, clips, and various information together with his viewers.

SHAKA's streams will continue to provide us with many interesting and enjoyable scenes.

ChatGPT

By Jeong Jinho

On November 30, 2022, an interactive AI service named ChatGPT was released to the world and quickly became known within just a few months, taking many people by surprise.

The reason is that unlike conventional search engines such as Google and Yahoo, ChatGPT quickly forms the answer to any question within seconds, rather than having users search for information by themselves.

How will it affect various fields, especially in the field of education? First, ChatGPT can be a great learning tool for students.

For example, in today's schools, a single teacher is responsible for dozens of students at various levels, but ChatGPT can provide information optimized for each student's individual level.

If a high school student finds Newton's laws of physics difficult at school, the student can prompt ChatGPT to "explain Newton's laws of physics in a way that even high school students who lack basic knowledge can easily understand."

Second, ChatGPT can help reduce the cost of private education for underprivileged students. For example, in the past, a student had to go to a school or academy with native speakers to learn accurate English pronunciation.

However, as ChatGPT is able to reproduce native speakers' pronunciation, they can study correct pronunciation without facing native speakers directly.

Accurate pronunciation plays a very important role in communication with native speakers, so it will be of great help to foreign language learners.

However, the development of radical technology is subject to many flaws. For example, Students can abuse ChatGPT and neglect tasks that require sufficient effort.

It can solve difficult problems and write essays in just a few minutes, making it difficult for teachers to know whether students have tried hard or not.

Not only that, ChatGPT can also provide students with false information because it cannot determine whether the information it has acquired is right or wrong.

No matter how useful the information ChatGPT provides is, it will be difficult to completely replace the existence of schools because schools also function as a place for social exchange.

Nevertheless, since its release, ChatGPT has shown amazing functionality, and the potential to grow is endless.

Just as humans have found a way to properly coexist with smartphones, humans will learn to control ChatGPT in a way that minimizes the negative effects on our lives.



The New ES CON FIELD

By Kizuku Kunita

In March, a one-of-a-kind ballpark was built in Kitahiroshima, and has become a symbol of Hokkaido.

The Nippon Ham Fighters played at Sapporo Dome for many years but moved to ES CON FIELD because of the Dome's high usage fee and the environmental problems.

One example of an environmental problem is that Sapporo Dome's field is made of artificial turf, which is very hard because it's spread out over concrete, and there is a high risk of knee injuries for athletes.

In addition, the foul area is too wide, and the walking distance from the benches to the home plate is twice as far as other stadiums, making it a very bad environment for a baseball game. The team requested Sapporo Dome to improve the environment, but nothing changed.

For the above reasons, the Fighters thought that it would be better for both the team and the players to own and operate a stadium rather than pay to use Sapporo Dome.

The new home of the Hokkaido Nippon-Ham Fighters has a retractable roof. The spectator area extends from the sunken field on the 2nd basement floor to the 4th floor above ground with a capacity of 35,000.

It forms part of Hokkaido Ball Park F Village, which includes the stadium, as well as accommodation facilities, commercial facilities, restaurants, condominiums, a sauna and a spa.

In addition, there are two field-level seats on the first and third base sides where you can see the players up close.

In addition to the immersive spectator experience, there is also a buffet-style restaurant where you can enjoy gourmet dishes that are a little different from what's available in the concourse.

On both wings of ES CON FIELD, two large LED screens measuring approximately 86m wide and 16m high were installed.

When the two are combined, they become the world's largest LED screen displaying high-brightness and high-resolution images linked to the content of the



game, enabling dynamic and powerful performances that shake the hearts of spectators, creating a never-before-seen spectacle. It provides an impressive viewing experience.

The ballpark is the first new baseball stadium of the Nippon Professional Baseball Organization (NPB) since the MAZDA Zoom-Zoom Stadium in Hiroshima, which opened in 2009 as the home of the Hiroshima Toyo Carp.

This is the second baseball stadium in NPB history with a retractable roof since the Fukuoka Dome opened in 1993, and the first indoor natural grass stadium in Japan.

The wall in the outfield is made entirely of glass to let in natural light and contribute to the growth of the natural turf. It also features a triangular roof designed with the motif of a traditional Hokkaido house.

You can get to the ballpark by shuttle bus, by car or on foot. At the time of opening, Kitahiroshima Station on the JR Hokkaido Chitose Line will be the closest station to the stadium, which is about a 20-minute walk.

In 2028, JR Hokkaido's new "Hokkaido Ballpark Station," which is directly connected to the facility, will open.

As of April 2023, in addition to shuttle buses to the aforementioned JR Kita-Hiroshima Station, there are 4 routes that will depart from and arrive at Shin-Sapporo Station, Nopporo Station, and New Chitose Airport. Of these, 3 routes, excluding Nopporo Station, can be used even on days when there are no professional baseball games or events.

Thus, ES CON FIELD has many attractions and features, and there are facilities that can be enjoyed all year round.

The stadium is where you can have an unprecedented experience. It is highly recommended to go there at least once if you visit the area.

What are Organic Vegetables?

By Ryoga Fujikawa

In Japan, organic vegetables are defined as follows:

1) no pesticides or chemical fertilizers have been used in the fields for more than 2 years for single-year crops and more than 3 years for permanent crops, and 2) organic vegetables are farmed without GM (Genetically Modified) seeds, synthetic fertilizers, or synthetic pesticides.

If it passes these requirements, farmers can use the JAS (Japanese Agricultural Standards) seal of approval.

However, there is no global consensus for the use of pesticides with organic vegetables.

Strictly speaking, pesticides are not forbidden, so farmers can use anything that consists of things like copper, sulfur, calcium oxide, vegetable oils and so on.

Whether farmers use pesticides or not, they can still sell their vegetables as organic.

In addition, organic vegetables contain more nutrients than normal like vitamin C and omega-3 fatty acids, but they are not necessarily healthier.

Also, it is necessary to grow organic vegetables in greenhouses, which use a lot of energy, so it is not better for the environment than vegetables grown using pesticides. Organic is just a kind of ideology.

It cannot be stated unconditionally that organic vegetables are superior, and they are more expensive than regular produce, so there is no need to actively buy them.

However, it is important to understand that consumers should buy what they need now, regardless of how the vegetables are grown, and that reducing food loss is better for the environment than anything else.

Furano Flower Garden Tomita Farm

By Haruna Watanabe

Hokkaido is rich in nature. Furano, especially, has many colorful and beautiful flower gardens. Various flowers bloom in May, but the best time to view them is in Mid July.

The most famous flower garden in Furano is Farm Tomita. There are 14 flower fields and facilities at Tomita Farm. The traditional lavender fields and Irodori fields are popular.

Tomita Farm's lavender field is the oldest lavender field in Japan, which is how Farm Tomita began.

It's also the field that triggered the spread of Furano's lavender throughout the country by being introduced on the Japanese National Railways calendar.

If you climb to the top of the field, you can see the scenery of the Furano Basin and Tokachidake mountain range beyond the lavender swaying in the wind.

The flowering time is from late June to early August, and the best time to see it is from early to late July.

The Irodori field is a representative field of Farm Tomita, where seven colored flowers such as purple lavender, white gypsophila, red poppy, pink Komachiso, and orange California poppy color the gentle hills.

A brightly colored flower



belt creates a beautiful rainbow on a gentle slope canvas.

The flowering time is from early to late July, and the best time to see it is from mid to late July.

There is not only a flower garden but also a cafe in the park.

There are various things such as soft serve ice cream, sweets, food and drinks. Soft serve ice cream is the most popular.

Lavender soft ice cream that can only be tasted at Farm Tomita is an original soft ice cream with lavender extract, which is refreshing and easy to eat.

In addition, there is also melon flavored soft ice cream using melons from Hokkaido and lavender white chocolate ice cream during summer only.

Farm Tomita is very suitable for sightseeing and is a place where you can enjoy seeing and eating. If you visit the Furano area, be sure to go there.



New Chitose Airport

By Yuji Hashiba

There is a place where many tourists who visit Hokkaido get an impulse to stay longer than they had anticipated. The place is New Chitose Airport, which is located between Chitose and Tomakomai and is called the gateway to Hokkaido. Most people think of an airport as just a stopover and there is no need to stay long. Rather, they imagine staying longer there means delays or missing a flight. New Chitose Airport is an airport that goes against this thinking. When you learn about the many attractions of this airport, you will absolutely want to go.

First of all, about the food. Hokkaido is famous for its fresh seafood, dairy products, *miso* ramen and soup curry. There is a place called Gourmet World on the third floor of the airport. Gourmet World is divided into three main areas.

The first is a restaurant arcade designed to replicate a street with tram tracks. You can find a row of traditional Japanese style food stalls there and you can enjoy eating at an Izakaya, a sushi restaurant, a soup curry shop and so on. This area is popular with both domestic and international visitors.

The second area is the food court, but it is not only a food court. What makes this place special is the view of the airplanes. Since this space faces an observation area, you can eat while watching the planes take off and land. It is a very popular place for both adults and children to enjoy.

The last area is called Shopping World. There, you can buy souvenirs from Hokkaido's leading confectionery stores like Royce, LeTAO, and Ryugetsu. When it comes to Royce, its chocolate factory is in this area, so customers can observe the work process through glass windows. You also have to check out the many souvenirs only available in New Chitose Airport. With so many restaurants and shops, you must be hesitant about what to eat and buy.

The second attraction of this airport is entertainment venues. One of these features is the variety of ways to spend time, not only dining and shopping. There are many facilities that are rarely found in other airports, such as hot springs, movie theaters, and museums. In particular, this airport is the first in Japan to have a hot spring and a movie theater. Thanks to these facilities, travelers can heal their tired body.

As for the museum, it's divided into two sections, the Airport History Museum, which focuses on the history of airplanes and New Chitose Airport, and the Sky Museum, which has a hands-on facility about the airport. In the former, you can literally learn about the history of New Chitose Airport from beginning to present.

In addition to that, you can also see miniature models of airplanes and the uniforms of cabin attendants from past generations. In the latter, you can take a picture wearing the uniforms of pilots and cabin attendants and touch real tires. There is also a simulator there where kids can experience piloting, so they will be fascinated. This is a great spot for people who love airplanes.

The attractions of New Chitose Airport described in this article are only part of the story. So, by all means, when you visit Hokkaido, try to experience as many things at New Chitose Airport as you can.

Famous Iwate Foods

By Ayumi Takahashi

Iwate became famous when it was ranked second of the “52 Places to Go in 2023” by The New York Times. Iwate is noted for its tourist sites, but the food is not to be missed.

Iwate's foods, from local dishes to recommended meals, sweets, and souvenirs, are popular among locals and tourists. After reading this article, you will surely want to go to Iwate!

Of the 47 Japanese prefectures, Iwate is the second largest after Hokkaido, and each local area has its own unique charms. Once you try the local foods of the countryside, you will surely be addicted to them, and they will warm your heart.

There are also many local specialties and products that make the most of the local flavor and features. You can get to know Iwate through its food

Iwate is famous for three

major types of noodles: Reimen, Wanko soba, and Jyajyamian. These are the same noodle dishes, but how they look, how they are eaten, and how they taste are very different. The Reimen is highly recommended.

The noodles are very firm and are served with a light, but rich soup made from beef or chicken.

The ingredients vary from restaurant to restaurant and include kimchi, hard boiled-egg, pork, and seasonal fruit. The spiciness of kimchi topped off with fruit is the perfect combination!

Maesawa beef is one of the most famous beef products in Japan. Only cattle grown in Maesawa Oshu City, Iwate, that reach a certain level of quality can claim the designation.

It is especially good for the



fatty part of the meat, called Shimo, which is fine and moist. There are various ways to eat it, such as shabu-shabu, steak, and sushi, but you can enjoy the flavor no matter how it is prepared.

There are a variety of sweets for the sweets' lover, such as Oshu Potatoes from Fleur Kikuya, a sweets store in Oshu City. The sweet potatoes used in Oshu Potatoes are made from a famous golden sweet potato called Naruto Kintoki.

Inside it is custard cream, which is a perfect match for their sweet potatoes. The ingredients are also carefully selected, many of which are grown in Iwate Prefecture.

In addition to Oshu Pota--

toes, Fleur Kikuya offers a variety of other delicious confections with deep local ties. Known in Iwate as the town's confectioner, Fleur Kikuya is responsible for many of Iwate's famous sweets.

There are several stores, and you can also order sweets by mail order, but it is recommended that you visit a store as there are some sweets that are only available in town.



There are many other delicious foods in Iwate. All of them are highly recommended. The food culture in Iwate Prefecture varies greatly from region to region. It's a good idea to visit many places while traveling in Iwate. Don't forget to check out the souvenirs as well.

Popular Hokkaido Attractions

By Ayami Nakajima

Hokkaido is the second largest island in Japan. There are many popular cities to visit in Hokkaido. The top four popular cities are Sapporo, Otaru, Asahikawa and Hokodate. Sapporo is the capital city and the largest city in Hokkaido. Sapporo has a lot of tourist attractions.

There are monthly events in Odori Park. The most popular event is the Sapporo Snow Festival in February. There are many snow statues, local foods, and projection mapping at night. In Sapporo alone, large parks include Moerenuma Park, Takino Suzuran Park and Nakajima Park.

Susukino is another famous tourist destination. It has delicious food such as fresh seafood and Genghis Khan. There are also izakayas, cafes, and bars where you can enjoy yourself from morning till night.

Otaru is near Sapporo and used to be the capital city of Hokkaido. It began as a fishing village. There are many delicious foods in Otaru. For example, in the shop Kamaei, you can have kamaboko, a type of cured sushi. And in the shop Naruto you can try zangi, a type of chicken nugget that is marinated then covered in seasonings and fried. Both shops are very famous. Since the fishing industry flourished, fresh seafood has been available. Many sweets are also famous. Lutao's Douvre Fromage, Amatou's marron cologne, and Yamanaka Farm's soft-serve ice cream are especially popular.



Asahikawa has many places to enjoy nature. Mt. Asahidake, the Sounkyo Onsen Ice Fall Festival, and waterfalls are popular natural spots. Meteor, Hagaromo, and Ginga are also popular natural spots. Asahikawa's famous foods are Shinkoyaki, a chicken dish with bones, Asahikawa Ramen, Jingisukan, and soup curry.

Hakodate has an exotic cityscape, and it has been selected as one of the world's three major night views. The reason for the exotic townscape is because most of the houses in Hakodate are a blend of Japanese and Western style. This is because Hakodate was one of Japan's leading trading ports. Interactions with foreigners introduced many western techniques which were then adopted to create the houses. Hakodate is famous for the sushi shop Kantaro, the chain restaurant Lucky Pierrot, and fresh squid.

Nagasaki, Kyushu

By Ayane Ota

What comes to mind when you think of Nagasaki? Nagasaki is very fascinating because it has a long history.

Let's take a look at some of the local food and tourist attractions in Nagasaki.

First, let's take a look at Nagasaki's specialty, Chanpon. Chanpon is a dish similar to ramen made by Chin Heijun, who worked at a Chinese restaurant called Shikairo in Nagasaki in 1899.



The dish includes pork, fish cake, cabbage, moyashi, squid, shrimp and champon.

It has more chewy noodles than ramen and a lot of ingredients, so if you go to Nagasaki, please try to eat champon at Shikairo.

Second, let's take a look at Huis Ten Bosch. It's a famous tourist attraction in Nagasaki.

This is the largest theme park in Japan and the same size as the country of Monaco. You can enjoy yourself all day, as it has many attractions.

First of all, the streets resemble scenes from the Mid-

dle Ages of Holland.

All the buildings in the Huis Ten Bosch are originally in Holland, and you can experience the special cityscape.

Huis Ten Bosch also has one of the largest tulip and rose gardens in Asia.

It has an overwhelming scale and beauty where you can enjoy the flowers in full bloom whenever you visit.

And finally, you can experience the world's largest scale illumination.

There you can see the endless blue light, the rainbow-colored canals, the church shining in white silver, and the European cityscape illuminated by warm golden light.

Finally, let's take a look at Inasayama. You can enjoy the million-dollar night view there, which was selected as one of the world's top three-night views.

If you take the ropeway or rail car and go to the top of a mountain, you can see Nagasaki's mountains and the sea even during the day.

There is a shop at the ropeway station where you can buy souvenirs and original goods limited to Nagasaki Ropeway.

If Nagasaki captures your interest, why don't you go for a visit.



Hokkaido Shrine

By Honoka Kumagai

Hokkaido Shrine is the most famous shrine in Sapporo, Hokkaido. In 1869, the three gods, Okunitama no Kami, Onamuchi no Kami, and Sukunahito no Kami, were enshrined as three pioneering gods. It is also said to be the strongest power spot in Sapporo.

At Hokkaido Shrine, they offer prayers for family safety, exorcisms, safe deliveries, Hatsumiya pilgrimage, Shichi-Go-San pilgrimage, car purification, and passing examinations. Hokkaido Shrine also holds various events.

It is the most visited shrine in Hokkaido on New Year's. During the New Year, many stalls are open, and you can enjoy them. In February, a bean-throwing event to drive out demons is generally held on Setsubun, and shrines in Hokkaido perform exorcisms around this time.

From April to May, cherry blossoms bloom and you can enjoy cherry blossom viewing. Hokkaido Shrine and Maruyama Park have long been popular cherry blossom viewing spots in Sapporo.

There are about 1,100 cherry trees at the Hokkaido Shrine, including Ezoyamazakura, Somei-yoshino and Yaezakura cherry trees. Stalls are set up during the blooming season.

In June, there is a festival at the Hokkaido Shrine. The Hokkaido Shrine annual festival is also called the Sapporo Festival, and many stalls are set up not only in the Hokkaido Shrine, but also in Nakajima Park, and the whole city of Sapporo transforms into a festive mood.

The Sapporo Festival is held every year for three days from June 14th to June 16th. On the last day, a portable shrine is carried around the town.



Shichi-Go-San in Honshu takes place on November 15th, but in Sapporo and parts of Hokkaido the Shichi-Go-San pilgrimage is held in October. Shichi-Go-San is a unique Japanese event to celebrate the growth of children.

It's a celebration for boys aged three and five, and girls aged three and seven. That's why it is called Shichi-Go-San (seven-five-three).

As you can see, Hokkaido Shrine is crowded with various events in spring, summer, autumn and winter. It doesn't cost anything to visit Hokkaido Shrine, so please go there.

SNS Nuisance Videos Increasing

By Reona Nagae

Since the beginning of this year, the topic of nuisance videos on SNS have often been reported by the media. It began with the sushi restaurant Sushiro case on January 29, 2023.

The perpetrator of this case had spit on the sushi and licked the soy sauce bottle.

This video was uploaded to a SNS and offended many people. The disturbance led to SNS users to search for past videos.

The Sushiro case commit-

ted by a high school student tarnished the image of conveyor-belt-sushi and caused huge damage to Akindo Sushiro Co.

As a result, the high school student who committed this crime was identified and his high school was flooded with complaints and slanderous phone calls.

He voluntarily stopped going to school, and tweets in support of Sushiro trended on SNS.

Uploading a video on the Internet like he did, and then deleting it but leaving the

data, is called a digital tattoo or a digital footprint.

Furthermore, if a digital tattoo of a bad deed remains, it can have an irrevocable impact on your life.

In fact, when the video he uploaded led to his identification, he was expelled from high school.

It was reported in the news in June that Akindo Sushiro Co. has filed a lawsuit against him claiming 68 million yen in damages. The case has not yet been adjudicated.

The psychology behind posting nuisance videos on

the Internet is mainly the desire to stand out among friends and to be popular.

There are many cases where people assume that only their friends can view the videos, but they are often spread further by their friends.

This incident should be a learning experience on how to deal with SNS.

Anything you post on a SNS will spread in the blink of an eye and will not disappear even if you erase it. Remember, it could ruin your life.

The History of Fighters Baseball Team

By Yuki Tsuda

The Nippon Ham Fighters have been making headlines with their move to a new stadium. Under Manager Shinjo the team is aiming for the league championship.

The baseball team was founded on November 6, 1945, by Saburo Yokozawa, and it was named the Senators. It joined the reestablished Japan Baseball Federation and participated in the league competition as a new team, alongside the Gold Stars.

Due to financial difficulties caused by insufficient funding, the baseball team, which was established by Mr. Yokozawa personally, had to abandon its management after just one season.

On December 18, 1946, the team was sold to the Tokyo Kyuko Electric Railway for 350,000 yen. The team was named the Tokyo Flyers after the sale.

In 1949, the team joined the Pacific League as a result of the two-league split during the offseason. In September 1953, the team completed their own Komazawa Baseball stadium in Setagaya Ward along the Tokyu train line and relocated from Korakuen Stadium.

In 1959, Isao Harimoto joined the team. He won the Rookie of the Year award, and the team achieved its first-ever A-Class ranking.



The ownership of the team was sold to the Nippon Ham Fighters in November 1973. To increase the number of spectators, the team relocated its home base in 2003 to the city of Sapporo where there had never been a professional baseball team.

In 2006, the Nippon Ham Fighters achieved their first league championship since 1981, marking 25 years since their relocation to Hokkaido.

The Nippon Ham Fighters achieved their first consecutive league championship in franchise history in 2007. In 2016, the Nippon Ham Fighters clinched their third Japan Series championship in 10 years since their last victory in 2006.

In 2022, former player and Nippon Ham Fighters' alumnus Tsuyoshi Shinjo became the team's manager, marking his return to the organization after his retirement. This appointment also makes him the first former player of the team to become the manager in franchise history.

In 2023, the Nippon Ham Fighters relocated from their previous home stadium, Sapporo Dome, to the newly constructed ES CON FIELD.



Film Review: Demon Slayer

By Sogo Nishimura

The popular TV anime series "Demon Slayer" began broadcasting in 2019 and was made into a movie in October 2020.

The story begins when the main character, Tanjiro, leaves his house, his family is killed by a demon.

Tanjiro was one of six children. He lost his father when he was young and lived with his siblings and his mother.

He was deeply saddened, so he decided to become a Demon Slayer.

The story is about a demon who captures some people on the Mugen Train.

The demon likes the disappointment and pain of humans.

Demon Slayers went to the train to kill the demon, but all the slayers disappeared into thin air.

Therefore, Tanjiro, his sister Nezuko, Zenitsu, Inosuke, and Kyoujuro, went there on a mission.

Can they get rid of the demons and protect the train passengers?

sengers? And can they come home alive?

In this movie, demon slayers use a lot of tricks to kill demons. The quality of the tricks is very sophisticated.

In addition, there is an interesting story about structure of the human body. Humans can breathe, so by working out how they breathe, they can become physically stronger.

In the story, something called "Total Concentration Breathing," is a breathing technique devised to defeat demons.

Humans inhale large amounts of air into their lungs, then their body becomes hot and strong. This helps to dramatically improve one's physical fitness in order to increase movement speed and sword swing speed.

The movie grossed over 40 billion yen (about 2 billion dollars) in Japan, and over 500 billion yen (about 3 billion dollars) worldwide.

You should see the anime before watching the movie.

Summer Sonic Music Festival

By Masanari Ishii

This allows people from different regions to tailor their experience based on their preferences.

The festival grounds feature multiple stages, with dozens of artists performing each day.

The main stage hosts renowned domestic and international artists and bands, delivering electrifying live performances that unite the entire audience.

Meanwhile, smaller stages showcase emerging talents and local acts, providing a diverse range of musical delights.

Summer Sonic is a large-scale music festival held annually in Japan.

This festival brings together top artists and bands from a wide range of music genres, including rock, pop, and electronic, for several days of celebration.

For music fans, it is one of the most anticipated events of the summer.

Summer Sonic takes place simultaneously in two cities, Tokyo and Osaka.

The artists and stage performances featured in one city can also be enjoyed in the other.

Amazing Trick Art

By Kazuho Otake

Have you ever heard of Trick Art? Trick Art provides the illusion of height and depth using various techniques. It is a form of entertainment that can surprise and amuse. This is an art form where you can experience wonder. Do you know how long Trick Art has been around? Actually, it dates back to ancient Greece.

Trick Art has its origins in the Trompe l'oeil technique. Trompe l'oeil is French for "to deceive the eye, to create an illusion", this is a technique in which the eye is tricked into believing that the object depicted by the is real, and the eye is fooled into thinking it is actually there.

The purpose of this technique (Trompe l'oeil) is that it was used not only for the enjoyment of the unexpected, but also as a major prop to express itself in a limited space. The Japanese artist Kenju Kazumura adopted this technique. He is the founder of Trick Art.

He is also a well-known manager. The first trick art museum, "Nasu Toric Art Pia" opened in 1992. That museum continued to grow, with the opening of the new "Angel's Crown Museum" in 1994 and the "Michelangelo Pavilion" in 1997.

Moreover, this entertainment park is one of the largest in Japan in terms of site area and number of artworks. Furthermore, visitors can not only enjoy trick art but also solve riddles. This theme park is located in Nasu-cho, Nasu-gun, Tochigi Prefecture. If you are ever in the vicinity, you should visit there at least once.

Finally, let's look at some representative artists who have applied trick art techniques. M.C. Escher is the most famous person in the trick art world. His most famous work is a painting called *Waterfall*.

The attraction of this work is in the way the water flows, and if you follow it with your eyes, you will find yourself in a state of confusion. It feels very strange, but the first time you see it, the shock will be great. If you are interested in M.C Escher's art, you should visit his museum, which is located at Lange Voorhout 74, 2514 EH Den Haag, the Netherlands.

The festival grounds feature multiple stages, with dozens of artists performing each day.

In addition to music, Summer Sonic offers a variety of food and drink booths, artist merchandise areas, and various entertainment elements.

Within the festival grounds, you'll find delicious food trucks and stalls offering a wide array of cuisines and beverages.

Moreover, there are artists'

signings, special events, contests, and other attractions, ensuring participants have memorable experiences beyond just the music.

Summer Sonic has gained recognition as a music festival that attracts not only local attendees, but also people from around the world.

With its scale and diversity, it has become a highly anticipated event for music fans from around the world every year.

Super Mario Brothers Movie

By Fuga Yakoh

Mario and Luigi are twin brothers who work as plumbers in New York. They wander into a new world filled with magic through a mysterious clay pipe. The brothers, who have been separated from each other, use the power of brotherly ties to save the world in crisis.

The film was created by Nintendo's development team and Illumination's production team, known for the Minions series. It's a film that brings the world of Mario games that have been created for the past 40 years into a fun story onto the big screen. It was released in theaters on Friday, April 28, 2023, with both Japanese subtitles and Japanese dubbing.

This film has taken in about \$1.2 billion in box office sales (approximately 179 billion yen), making it the second highest animated film of all time. Toho Towa, which distributes the film in Japan, announced the result on the second day of the film's release. It exceeded the box office sales of *Frozen* on the first day of its release.

The voice actor in the game *Mario* is Charles Martinet. He



has a cheerful and high-pitched voice. However, he is not the voice of Mario in the movie, although he does appear in a cameo.

In this movie he plays two characters, Giuseppe and Mario's father. In the movie *Mario*, Mario's voice is played by Chris Pratt, who is known for *Guardians of the Galaxy*.

Finally, this film has many easter eggs for the Mario series fans to enjoy, but even those who are not familiar with the game can enjoy it. As a result, it has high ratings among viewers. This film can be enjoyed by both children and adults.

Film Review: Pulp Fiction

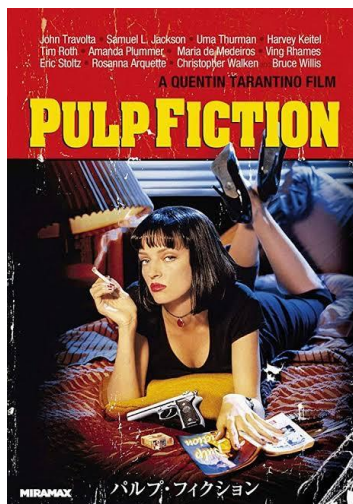
By Hikaru Ohmura

Pulp Fiction is a 1994 American film directed by Quentin Jerome Tarantino. He is known as an avid movie buff. His other notable works include *Reservoir Dogs* and *Jackie Brown*. It is well known that he worked on a large number of films as a clerk in a video rental store and wrote screenplays while working. He also likes maniacal movies, Japanese animation and musicals, mainly from Asia.

The film has a disjointed timeline and freely parodies classic films. However, it has even been called "the film that turned 20th century cinema on its head." Why is that?

First, the characters are unique. Vincent Vega is a hit man who works for a gang boss. Vincent's partner, Jules Winfield, has a mysterious religious belief where he recites passages from the Old Testament before he kills someone. Mia Wallace is the wife of the gang boss. She is a drug addict.

Butch Coolidge is a professional boxer. Fabian, Butch's lover, likes pancakes. Marcellus Wallace is the gang boss who controls Vincent and others. Pumpkin and Honey Bunny are a couple who commit robberies. Jimmy, a friend of Jules, is played by director Quentin Tarantino. He has appeared in some form



or another in films he has directed.

Second, the film contains many hidden elements. Hence, one can watch the film without getting bored.

You can also feel very comfortable with some of the foreshadowing scenes.

However, the film may seem confusing at first glance because of the disjointed timeline.

However, that makes it all the more interesting. This is because you put scenes together in your mind like a puzzle or think of them like solving a riddle.

Third, Tarantino borrows from various films. In an interview, when asked,

"You're ripping off other movies, aren't you?" He said, "I steal from everything. Great artists steal: they don't do homages."

Arguably the most famous scene in *Pulp Fiction*, the dance scene between Vincent and Mia, is a tribute to the classic Italian film *8 1/2*, which was nominated for an Academy Award.

One Japanese film is also paid homage to. It's from the narration at the beginning of the American version of *Bodyguard Kiba*, an action movie starring Japanese actor Shinichi Chiba. Tarantino is a big fan of Shinichi Chiba and even offered him a role in *Kill Bill*. There are many other scenes that pay homage. Tarantino is very playful.

Fourth, Tarantino is not only concerned with the story, but also with the music. Every film uses unique songs from different eras and genres. *Misirlou*, a folk song from the Eastern Mediterranean region, is a song many of you may have heard before.

It's no exaggeration to say that this song became famous due to the influence of *Pulp Fiction*. Then there is "You Never Can Tell," a song by Chuck Berry, one of the founders of American rock and roll and revered as a rock legend. Many people have been mesmerized by Mia and Vincent dancing to this song. These are just a few of the reasons why *Pulp Fiction* is so popular.

Film Review: Justice League

By Hotaka Kita

In the film *Batman vs Superman: Dawn of Justice*, Superman died when the villain Doomsday pierced his heart.

After Superman's death, Batman realized the world was in danger. Batman thought that he couldn't save the world alone, so he decided to scout for four superhumans.

The name of the main villain in Justice League is Steppenwolf. He plans to conquer the world by collecting three powerful so-called "Mother Boxes."

When he collects all three Mother Boxes, he will obtain a powerful force. The heroes try their best to protect the world, but there are some obstacles.

This DC superhero film was released in 2017 by Warner Bros. Pictures. The film was directed Zack Snyder. The screenwriters are Chris Terrio and Joss Whedon.

The cast includes Henry

Cavill as Superman, Ben Affleck as Batman, Gal Gadot as Wonder Woman, and Ciaran Hinds as Steppenwolf. Many other celebrated actors appear in this film.

The film's action and special effects were filmed with the frequent use of green screens and computer graphics.

Many things, such as Batman's cape and Steppenwolf himself, were often created with computer graphics.

One of the characters, Cyborg, has a body made of computer graphics. The precision of the computer graphics used by him is remarkable.

In the making of this film, animation supervisor Simeon Duncombe and visual effects supervisor Anders Langlands comment in detail on how the film was shot. You can understand a few things from their comments.

First, the film was shot both in the studio and outside. In ac-



cordance with the storyboard, the film was carefully rehearsed and filmed.

Director Zack Snyder gave detailed acting instructions to the actors, and they listened to his instructions seriously.

The film crew used a lot of special effects. For example, they created a large square in the studio.

They placed broken cars and concrete wreckage there to represent battle scenes.

Sometimes, to film a scene of Batman jumping from a high place, the crew would set up a platform so high that it almost reached the ceiling of the studio.

When filming outside, the crew attached explosive mate-

rial to the building and blew it up.

Secondly, you can see that the filming of this movie was done in a relaxed atmosphere. Wonder woman was joking around wearing a Batman mask, and Aquaman took her sword and did something different from the original scene.

When a good scene was shot, Director Zack Snyder praised all the cast members and film crew with a smile.

Finally, you can enjoy seeing a variety of DC heroes in this movie.

The computer graphics and action are powerful. For those who know the story of DC heroes, you will enjoy this movie very much.

Popular Netflix Shows

By Shizuka Kudo

Streaming services for watching movies and shows are very popular these days. Netflix is one of the most popular services throughout the world, including Japan. Let's look at some of the most popular movies and dramas in Japan and other countries.

By comparing various sites to find out what genres are popular, we can see that the most popular drama in the world cur-

rently is "FUBAR." "FUBAR" is the first American action-comedy television series produced by Nick Santra for Netflix to star Arnold Schwarzenegger.

The main character, Luke, hides his identity as a CIA agent from his family. He was about to retire at the age of 65, but in fact, his daughter was also a CIA agent.

Perhaps because the parent-child relationship became complicated, the two of them were placed in a buddy group and challenged to take on a dangerous mission. The highlight of this drama is whether they can protect the world. Despite its launch in May, it continues to maintain its top ranking in the world.

A popular movie in Japan is *Kingdom 2: Far and Away*. It is a work by manga artist Yasuhisa Hara. It began serialization in book form in 2006 with the first "Kingdom," and a third *Kingdom* movie

will be released this July.

As of 2022, the cumulative circulation exceeded 87 million copies. It is a live-action movie based on the popular comic.

The first print version of the story is set during China's Spring and Autumn Period and Warring States Period. The story centers on the journey of an unknown boy and young king as they try to change the kingdom's course of history where it will lead to their destiny being marked by violence and pain.

In the third *Kingdom 2* film, neighboring countries start invading Qin across the border. Ri Shin, the main character, dreams of fighting as an infantryman on the battlefield. "FUBAR" and *Kingdom 2* are very popular and interesting.

Netflix's popular movies change every week, but these shows are in the top 10 for consecutive weeks. Even if you're not interested in action movies, you won't get tired of either, so you can enjoy them.



Filming Locations of *First Love Hatsukoi*

By Himari Satou

First Love Hatsukoi, which is a Netflix series drama, was written and directed by Yuri Kantake based on two classic songs titled “First Love” and “Hatsukoi” sung by Hikaru Utada.

In December 1997, Yae and Harumichi met for the first time, then they fell in love with each other.

Their romance began from the first time they met up to 2018.

It is a painful and beautiful story, and the winter scenery of Hokkaido and the clothes of the characters are also very beautiful.

The soap opera is also shot in Tokyo, Aichi and Tochigi, but most of it is shot in Hokkaido.

At the beginning of the first episode, the Asahikawa Tokiwa Rotary is shown with the title.

The rotary is the largest in Japan and is called a devil’s rotary because it is hard to enter the rotary and go out the way you want to go.

Yae also almost caused an accident in the rotary. However, the illuminated rotary taken from above is very beautiful and fantastic.

In this TV drama, some foods, as well as beautiful places, captured people’s imagination. Harumichi’s favorite food is Napolitan spaghetti, so Yae makes it for him and tells him about a good restaurant.

The restaurant is Seiyoken in Chitose. She visited the restaurant twice. The first time she went there she enjoyed herself, but next time she cried and ate it alone.

Actually, you can’t eat Napolitan spaghetti there because it is not on the menu, but it’s



worth going.

There is one more impressive food in this drama. It is grilled shrimp that Otarō, Yae’s colleague, ate with her.

The name of the izakaya is Robata-yaki Utari, and it is in Susukino, which is in Sapporo.

At Robata-yaki izakaya, the staff grills seafood or vegetables over charcoal fire in front of guests and hands it to them.

Robata-yaki Utari is the oldest Robata-yaki restaurant in Sapporo, so you can feel old-

style Japanese food culture.

In Yubari, there is a lilac tree that Yae loves. The tree is in Heidi Farm. Yae and Harumichi buried a time capsule under the tree after they graduated from high school, and they promised to dig it out in ten years.

The tree was planted for filming the drama, but it is still there.

If you want to go there, it is best to go from May to June while the lilacs are in bloom.

Music Review: Spitz

By Sho Ota

There are a lot of famous groups in Japan. Spitz is a popular Japanese group, known for their unique style, poetic lyrics, and melodic music that has captured the hearts of fans both inside and outside of Japan.

Here is a closer look at what makes this band so special.



The group was formed in 1987 by four high school friends, Masamune Kusano, Tetsuya Miwa, Akihiro Tamura, and Tatsuya Tamura. Spitz originally started as a high school band, playing in concerts and at community events.

Over time, they became a popular indie band, eventually signing a record deal with the Sony Music Entertainment Japan label.

Spitz’s music is characterized by its poetic lyrics and a gentle, acoustic sound, often featuring soft guitar riffs, harmonious vocals, and a delicate rhythm section.

The band is known for producing songs that evoke a sense of nostalgia, melancholy, and beauty.

With more than 30 years in the music industry, Spitz has become a major influence on Japanese pop music, and their music has become a part of the cultural heritage of Japan.



Many younger Japanese artists cite Spitz as an influence and inspiration.

Spitz has released over 17 studio albums, several of which have topped the Japanese music charts.

Their most successful albums include “Hibino Saseragi” “MimimemeMIMI” and “Sora mo Toberu Hazu.”

Their music has also been used in popular anime and film soundtracks.

Spitz has won numerous awards throughout their career, including 8 Japan Record Awards and the Gold Disc Award.

The band has gained an extensive fanbase not only in Japan, but also in other countries including Taiwan, Thailand, and South Korea.

Kawasaki Frontale J-League Soccer

By Chie Takeyama

J-League is the general term for Japan's professional soccer league. There are a total of 60 teams divided into three leagues: J1 (20 teams), J2 (22 teams), and J3 (15 teams).

Kawasaki Frontale is a team in Kawasaki City, Kanagawa Prefecture, which belongs to the J1 League, the highest league in the J-League.

The organization consists of 34 players and 29 staff members for a total of 63 people.

The history of this team dates back to 1955 when it was founded as the Fujitsu Soccer Club. In 1977, the club was approved as an associate member of the J-league and joined the J-league in 1999. Frontale means "front" or "front decoration"

in Italian.

This expresses the frontier spirit of always taking on challenges at the forefront, and the attitude of fighting squarely from the front.

The azaleas and dolphins on the team emblem and the light blue team color symbolize Kawasaki, an attractive coastal city open to the world.

Kawasaki Frontale boasts the most goals scored in Japan every season, and their quick attacks take advantage of their numbers, and they show their overwhelming offensive power over and over again.

The appeal of Kawasaki Frontale is not only limited to football. One of their attractions is their "community-based



activities" centered in Kawasaki City, the hometown of the company.

Team flags are planted in front of stations and shopping streets in Kawasaki City, and Frontale's team song is used for the departure bells at the four stations closest to the stadium. Frontale is everywhere in the city.



By Asahi Suzuki

There are a lot of football fans around the world. Most people would say the Premier League is the best football league in the world.

The Premier League is an English league. Until a few years ago, Japanese players couldn't achieve good results.

However, Japanese player Kaoru Mitoma is making a big impact.

He was born on May 20, 1997. He started playing soccer in elementary school because of his older brother's influence. In 2020, his career began in Kawasaki Frontale of the J-League.

Japanese Soccer Star Kaoru Mitoma

He gave outstanding performances and was named to the best eleven. In 2021, he attracted worldwide attention and moved to Royale Union Saint-Gilloise in Belgium.

He achieved good results there, and in 2022 he moved to Brighton in the Premier League.

As previously stated, the Premier League is the best football league in the world, so people didn't expect him to get results right away.

However, they were wrong. He was highly regarded in the Premier League.

Everyone was attracted to his play. Some soccer fans say Brighton is one of the most exciting clubs.

The best thing about this team is its offense. It's ranked 12th of the best clubs in Europe by an international website.

His best feature is his dribbling ability. His dribbling is fast and unpredictable, so it is not easy to stop him, even for the top players.



The trust he has from the team is deep. One of his teammates said, "He is like a joke" when asked about him.

In addition, he received praise from Brighton's media. They said that Mitoma has become one of the league's most exciting, and decisive players.

He scored seven goals and

he broke the record for the most goals in a season by a Japanese player.

However, the head coach of his team said he could probably score more and that he would like him to score at least 15 goals next season. "He has that quality and potential," he said.

